

ALGAE FROM ANDALUSIA FARM, BALDWIN COUNTY, GEORGIA

Kalina Manoylov

Georgia College and State University

Introduction

Species composition of algae can be used to characterize algal biodiversity in an area and infer other conditions that directly or indirectly affect the algae. Morphologically diverse algae are good indicators of aquatic habitats. Georgia College and State University (GCSU) Biology students helped with sample collections. Lake, wetland and stream habitats were sampled from Andalusia Farm, GA. Andalusia Farm is located south of the Lake Sinclair sites and has minimal human impact as it is a preserved 500 acre forest with wetland, streams and man made ponds (see <http://www.andalusiafarm.org/>). Based on shapes visible in light microscopy (LM) algal groups were arranged according to the abundance we observed and priority was given to species that dominated the observed communities and/or persisted over the 13 months of weekly observation.



Images from One of several livestock ponds on the property. <http://www.andalusiafarm.org/>



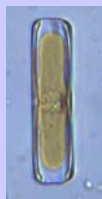
Tobler Creek, the spring fed waterway that flows through Andalusia.



Tobler Creek, the spring fed waterway that flows through Andalusia.



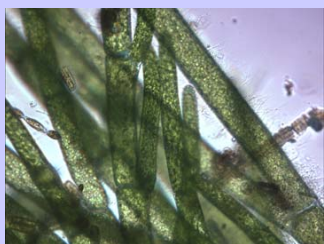
Diatoms



Pinnularia, Diatom



Eunotia (Chain and single), Diatom



Cladophora (green filamentous), 20X



Anabaena, Blue-green



Hyalotheca, desmid



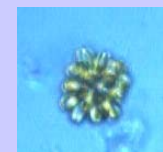
Stigeoclonium (green filamentous algae), 40X



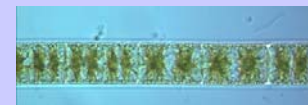
Pediastrum (green coccoid), 40X



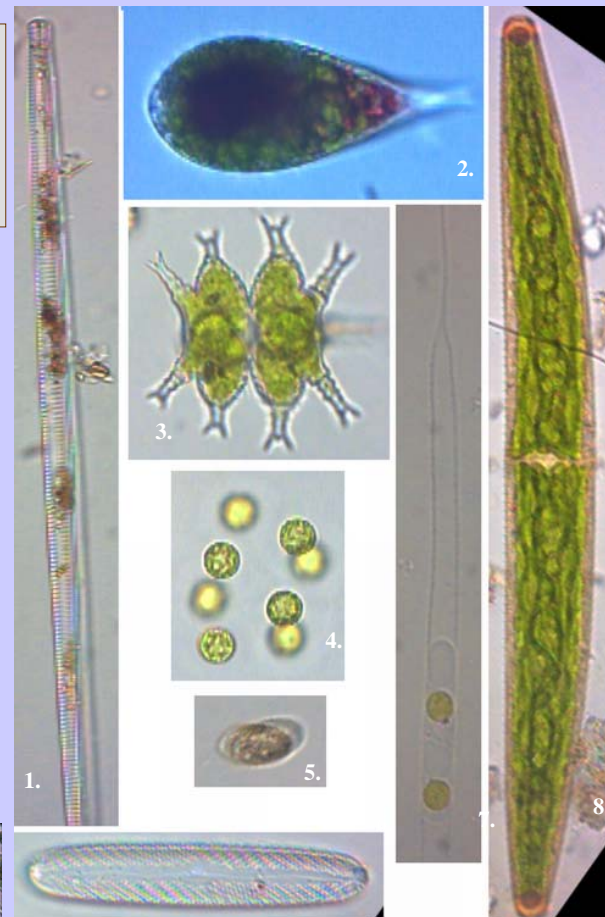
Volvox (green flagellated algae) colony, 40X



Synura, Synurophyte



Zygnuma, green



Andalusia Farm: 1. *Synedra*, diatom; 2. *Euglena*; 3. *Staurastrum*, green; 4. *Glucocystis*, green; 5. *Cryptomonas*; 6. *Urosolenia*, diatom; *Closterium*, desmid (from Eilers et al. 2008 poster)